

# Recordkeeping Committee Report

## EEI Safety Survey - 2009

### Participants

2009 | 75

2008 | 71

### Spreadsheets

Available Online

### Reports & CD

May 21, 2010

2

This year we are pleased to report that there has been an increase in participation, going up from 71 in 2008 to 75 in 2009. We are going to do our best to increase participation again next year.

The spreadsheets are now available to be downloaded by survey participants. All you need to do is to sign into your survey account to access and download file.

Our production agenda is also on schedule. This year the printed reports and CD's will be shipped on or before May 21<sup>st</sup>.

## Total Company Data

	2006	2007	2008	2009	Change
Hours	697M	765 M	784 M	849 M	+ 64 M
Employees	352 K	385 K	393 K	425 K	+ 31 K
Deaths	21	19	13	9	- 4
DART	1.57	1.47	1.30	1.17	- .13
Severity Rate	28.79	29.33	24.25	20.67	- 3.58
LWDCR	.78	.73	.63	.55	- .08

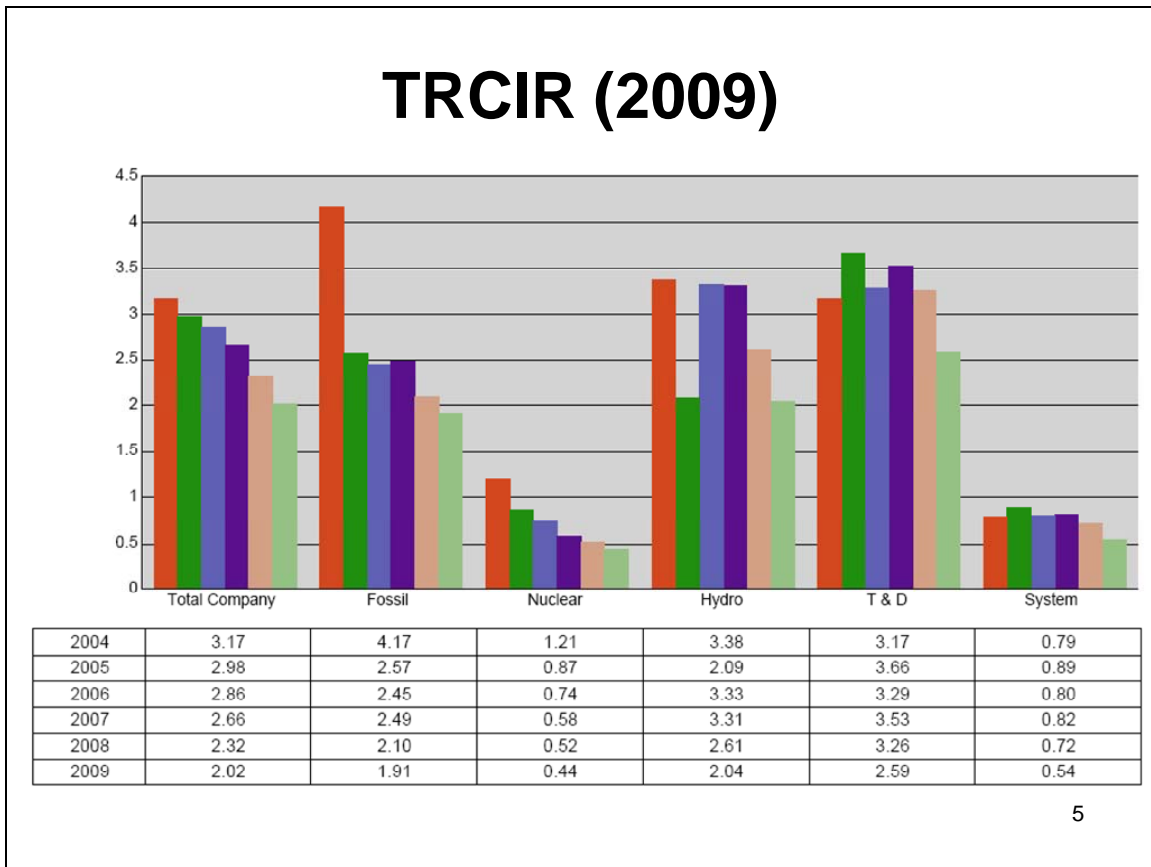
Looking at Total Company Data from a historical perspective, the industry continues to improve. The industry has worked more hours with more workers, and reduced the number of fatalities, DART Rate, Severity Rate, and Lost Work Days Case Rate.

This trend looks to be consistent throughout most of the reporting areas.

## T&D Data

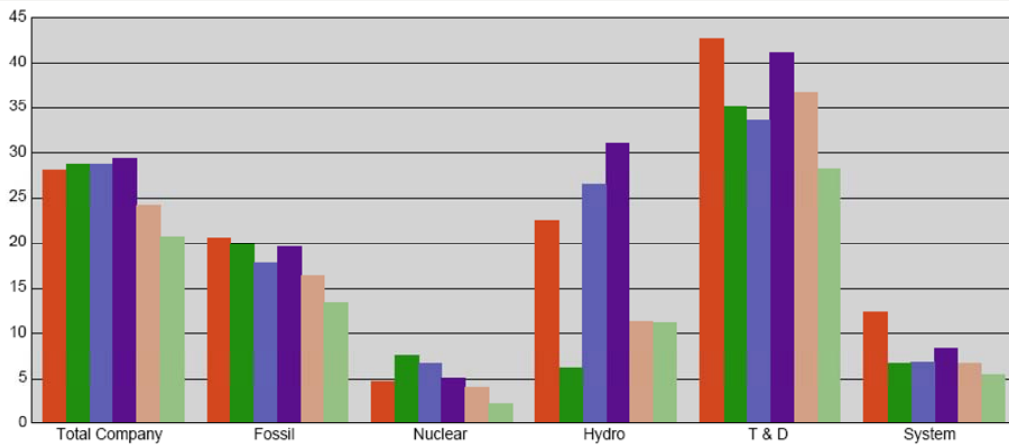
	2006	2007	2008	2009	Change
Hours	228 M	258 M	269 M	291 M	+ 22 M
Employees	113 K	129 K	134 K	146 K	+ 12 K
Deaths	16	9	9	7	- 2
DART	1.88	2.07	1.88	1.58	- .3
Severity Rate	34.18	41.17	36.76	28.22	- 8.54
LWDCR	.95	1.01	.91	.78	- .13

Looking at T&D, we also have more workers, more hours, fewer fatalities, and all rates have decreased.



This graph tells the history of Total Recordable Incidents over a six year period. The Total Company graph shows a steady decline over the entire six year period. Overall this has been the best year for Total Recordable Incidents.

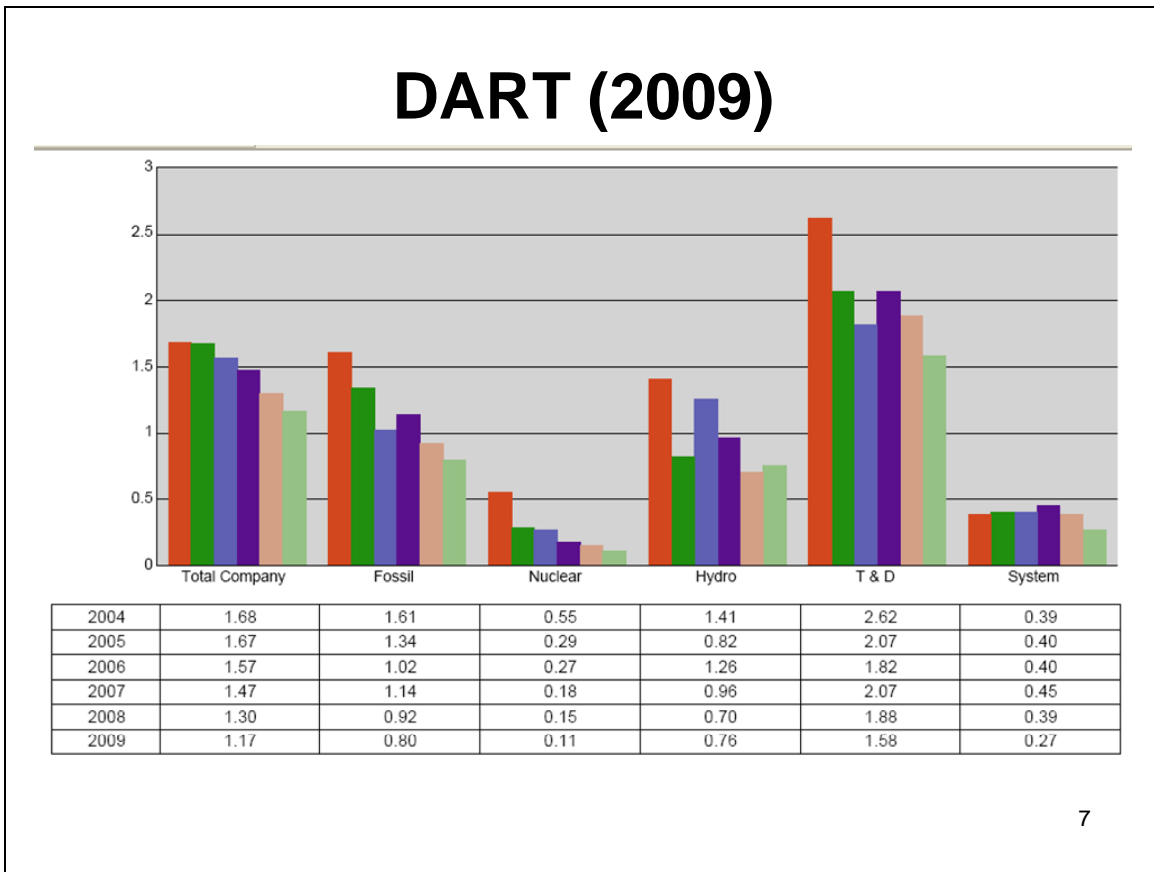
## Severity Rate (2009)



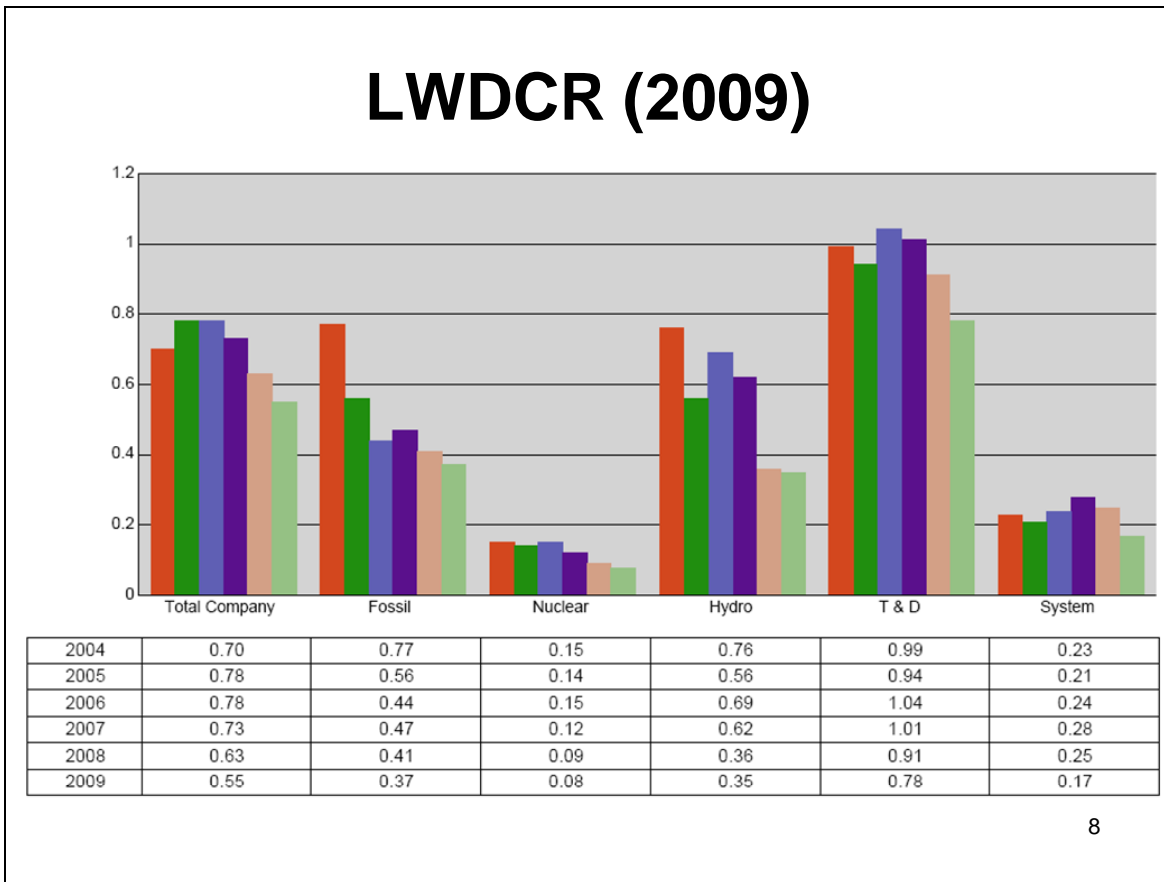
2004	28.09	20.55	4.68	22.42	42.70	12.51
2005	28.77	19.91	7.62	6.23	35.17	6.76
2006	28.79	17.79	6.70	26.46	33.64	6.79
2007	29.33	19.57	5.12	30.99	41.17	8.45
2008	24.25	16.46	3.90	11.29	36.76	6.70
2009	20.67	13.45	2.18	11.17	28.22	5.43

The same is true for the Severity Rate. The reporting categories represented, all show an improvement over last year.

In fact the Severity Rate is at the lowest in a six year period, with the exception of Hydro in 2005.



Looking at DART Rate, once again the Total Company chart is very impressive showing constant improvement. All areas decreased over last year except Hydro, where there was a very small increase.



Finally, the Lost Work Days Case Rate has also went down in each reporting area. It looks like the biggest improvement was in T&D. It decreased from .91 to .78.

## Motor Vehicle Data

	2006	2007	2008	2009
Vehicles	66 K	75 K	76 K	93 K
Miles	753 M	1,275 B	992 M	1,194 B
Miles / Vehicle	11 K	16 K	12 K	12 K
AFR	6.14	4.46	5.17	5.94

9

This table shows some history on Motor Vehicle Accidents. In 2009 you used more vehicles and drove more miles than you did in 2008. In both years you averaged 12 thousand miles per vehicle. However, this year there was a small increase in the Accident Frequency Rate, jumping from 5.17 to 5.94.

## Motor Vehicle Data - 2009

Group	Vehicles	Number of Miles Operated	Number of Accidents	Average Miles per Vehicle	Frequency Rate of Accidents
1	60,704	811,256,464	4,353	13,364	5.37
2	21,893	265,018,593	1,650	12,105	6.23
3	6,714	82,065,464	633	12,223	7.71
4	3,598	36,132,957	458	10,043	12.68

45 ←

10


Forty-five organizations participated in the Total Accident area. The MV Accident Rate varies from Group to Group. The larger the Group, the lower the rate. There is a significant difference between Group 1 and Group 4. Also notice how the group with the lowest rate (Group 1), has the highest miles per vehicle. With only one small exception, the larger the group, the more miles per vehicle, and the lower the rate.

## Preventable - 2009

Group	Vehicles	Number of Miles Operated	Number of Accidents	Average Miles per Vehicle	Frequency Rate of Accidents
1	60,704	811,256,464	2,082	13,364	2.57
2	23,611	279,918,807	692	11,855	2.47
3	6,714	82,065,464	302	12,223	3.68
4	3,953	40,338,248	165	10,204	4.09
<b>Totals</b>	<b>94,982</b>	<b>1,213,578,983</b>	<b>3,241</b>		
<b>Average</b>	<b>23,746</b>	<b>303,394,746</b>	<b>810</b>	<b>11,912</b>	<b>3.20</b>

38 ←

This year was the first year we attempted to collect Preventable Motor Vehicle Accidents. Thirty-eight organization participated in the Preventable Accident area. The Accident Rate is currently at 3.2.



### EEI Safety Survey - Injury Details

Save Data    Return to Main Survey

For Year: 2009

Company
Fossil
Coal
Gas
Nuclear
Hydro
T&D
System / HQ
Lineman
Apprentice Lineman
Meter Readers
Trouble Man
Mechanic
Substation Electrician

#### COMPANY TOTALS ONLY

a. PART OF BODY CODES

I. Head	IV. Trunk
<input type="text" value="0"/> 10. Multiple Head Injury	<input type="text" value="0"/> 40. Multiple Upper Extremities
<input type="text" value="0"/> 11. Skull	<input type="text" value="0"/> 41. Upper Back Area
<input type="text" value="0"/> 12. Brain	<input type="text" value="0"/> 42. Lower Back Area
<input type="text" value="0"/> 13. Ear(s)	<input type="text" value="0"/> 43. Disc
<input type="text" value="0"/> 14. Eye(s)	<input type="text" value="0"/> 44. Chest
<input type="text" value="0"/> 15. Nose	<input type="text" value="0"/> 45. Sacrum and Coccyx
<input type="text" value="0"/> 16. Teeth	<input type="text" value="0"/> 46. Pelvis
<input type="text" value="0"/> 17. Mouth	<input type="text" value="0"/> 47. Spinal Cord
<input type="text" value="0"/> 18. Soft Tissue	<input type="text" value="0"/> 48. Internal Organs
<input type="text" value="0"/> 19. Facial Bones	<input type="text" value="0"/> 49. Heart
	<input type="text" value="0"/> 60. Lungs

12

This is the second year we've collected Injury Detail data. Twenty organization provide data in the Total Company section. You may recall that this information is based on the NCCI codes. These codes are used in the classification of workers comp injuries. From this data we're able to generate a Summary Report.

<b>Apprentice Lineman</b>		
<i>Part of Body</i>		
<u>Count</u>	<u>Percentage</u>	<u>Description</u>
16	42.1%	Upper Extremities
11	28.9%	Trunk
7	18.4%	Lower Extremities
2	5.3%	Head
2	5.3%	Multiple Body Parts
0	0.0%	Neck
<i>Nature of Injury</i>		
<u>Count</u>	<u>Percentage</u>	<u>Description</u>
32	100.0%	Specific Injury
0	0.0%	Occupational Disease or Cumulative Injury
0	0.0%	Multiple Injuries
<i>Cause of Injury</i>		
<u>Count</u>	<u>Percentage</u>	<u>Description</u>
12	35.3%	Strain or Injury By
7	20.6%	Cut, Puncture, Scrape Injured By
5	14.7%	Fall, Slip or Trip Injury
4	11.8%	Caught In, Under or Between
3	8.8%	Burn or Scald—Heat or Cold Exposures—Contact With
1	2.9%	Motor Vehicle
1	2.9%	Stuck or Injured By
1	2.9%	Miscellaneous Causes
0	0.0%	Striking Against or Stepping On

This is what the report looks like. This page shows the data generated for Apprentice Lineman. It identifies the Body Part Injured, the Nature of the Injury, and the Cause of the Injury. The actual report includes all job classes, generation categories, as well as T&D data. In addition to this report, we also provide a spreadsheet that contains all the source data.

## Recommendations

- Evaluate Motor Vehicle Interface
- Evaluate Injury/Illness Validation Test
- Evaluate /Change Password Interface
- Online flash presentation instead of webinar